



# LimbArt

**Prosthetic Laminating Sleeves,  
Cosmetic Covers & Fabric Panels**

**DESIGNS AND SIZES**

Proudly Bought to you by SocketWorx, a Division of Ortholam

## We now manufacture LimbArt Prosthetic Sleeves and Cosmetic Covers!

The **LimbArt Prosthetic Sleeve** can be used as a final beauty laminating sleeve in place of your regular perlon veil stockinette. These sleeves are made from the finest quality Lycra material and are available in a variety of plain colors and fashionable graphic designs to enhance the expression of the attitude and personality of your patient's prosthetic sockets.

- Affordable and Great Quality
- Made from the Finest Lycra Material

**For Best Results, Use the  
LimbArt Resin by Ortholam**

**LimbArt Cosmetic Covers** are available as an alternative or an addition to the LimbArt Prosthetic Sleeves, providing a new or replaceable cover for the prosthesis and suspension sleeve.

- Wrinkle Free
- 4 Way Stretch Technology
- Easily Stretches up to 200%
- Conforms to Mould Contours
- Fits Over any Shape / Size
- Time Saver
- Large Variety of Designs and Sizes available
- Custom Printed Images

Email your Purchase Order to:  
[SALES@ORTHOLAM.CO.ZA](mailto:SALES@ORTHOLAM.CO.ZA) or  
Call/WhatsApp: 082 811 6280



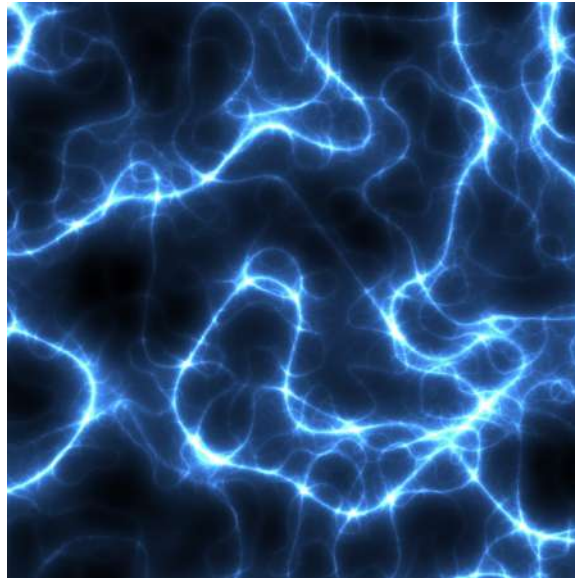




## DROPLETS

Design Pattern # : 10500

Image shown is approx. 30cm x 30cm



## BLUE LIGHTNING

Design Pattern # : 10501

Image shown is approx. 30cm x 30cm



## GREEN CAMO

Design Pattern # : 10502

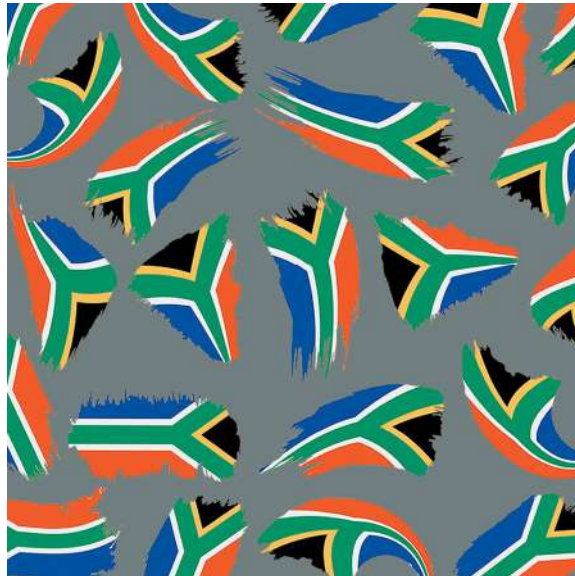
Image shown is approx. 30cm x 30cm



## JUNGLE ANIMALS

Design Pattern # : 10503

Image shown is approx. 30cm x 30cm



## SA FLAGS

Design Pattern # : 10504

Image shown is approx. 30cm x 30cm

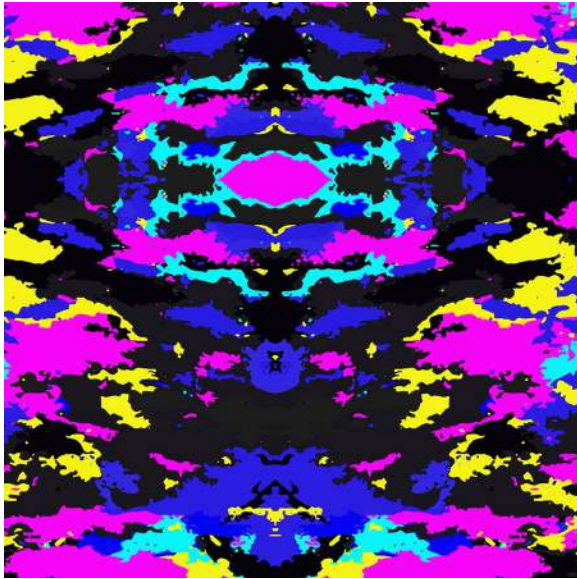


## LIGHT BLUE PLANES

Design Pattern # : 10505

Image shown is approx. 30cm x 30cm





## MULTI COLOR CAMO

Design Pattern # : 10506

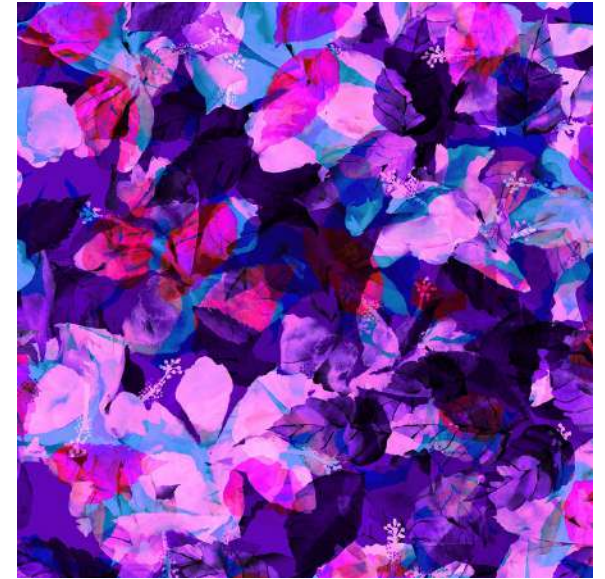
Image shown is approx. 30cm x 30cm



## PINK ANIMAL PRINT

Design Pattern # : 10507

Image shown is approx. 30cm x 30cm



## PINK PURPLE FLORAL

Design Pattern # : 10508

Image shown is approx. 30cm x 30cm



## ABSTRACT CAMO

Design Pattern # : 10509

Image shown is approx. 30cm x 30cm



## ORANGE FIRE SKULLS

Design Pattern # : 10510

Image shown is approx. 30cm x 30cm



## MINIONS

Design Pattern # : 10511

Image shown is approx. 30cm x 30cm

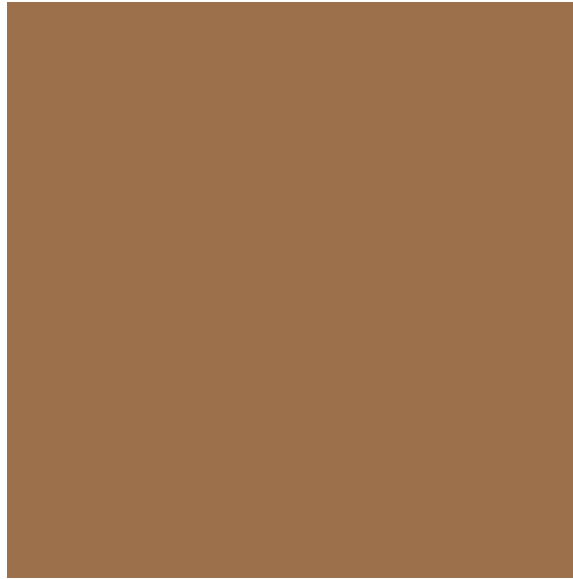




### **DARK BROWN**

Design Pattern # : 10512

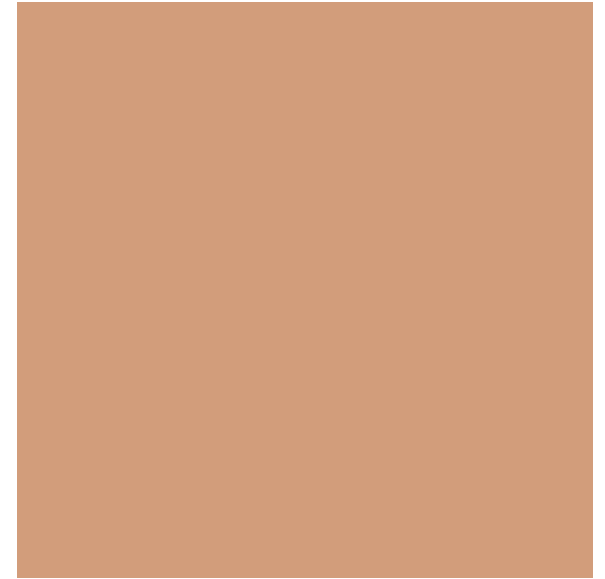
Image shown is approx. 30cm x 30cm



### **BRONZE**

Design Pattern # : 10513

Image shown is approx. 30cm x 30cm



### **CAUCASIAN**

Design Pattern # : 10514

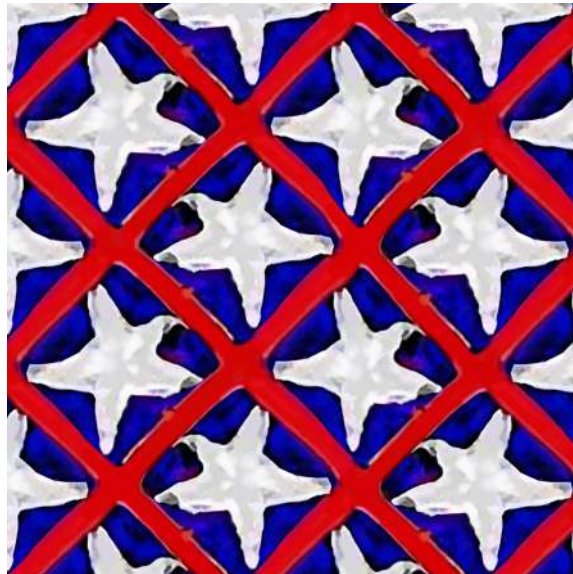
Image shown is approx. 30cm x 30cm



### **LIGHT BROWN**

Design Pattern # : 10515

Image shown is approx. 30cm x 30cm



### **STARFISH**

Design Pattern # : 10517

Image shown is approx. 30cm x 30cm



### **SPACE**

Design Pattern # : 10518

Image shown is approx. 30cm x 30cm

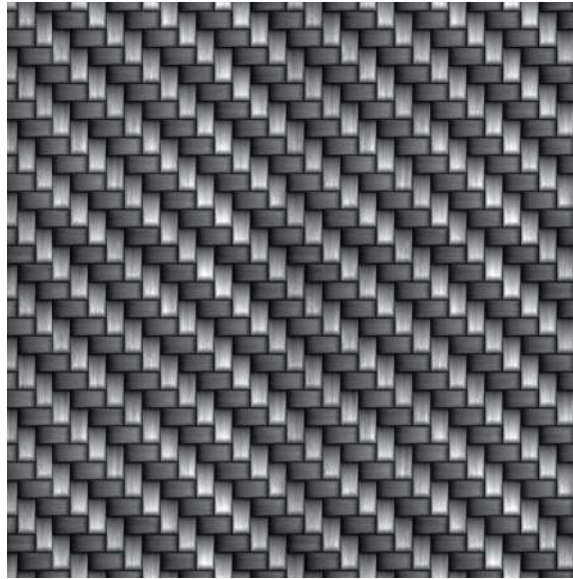




## DENIM

Design Pattern # : 10519

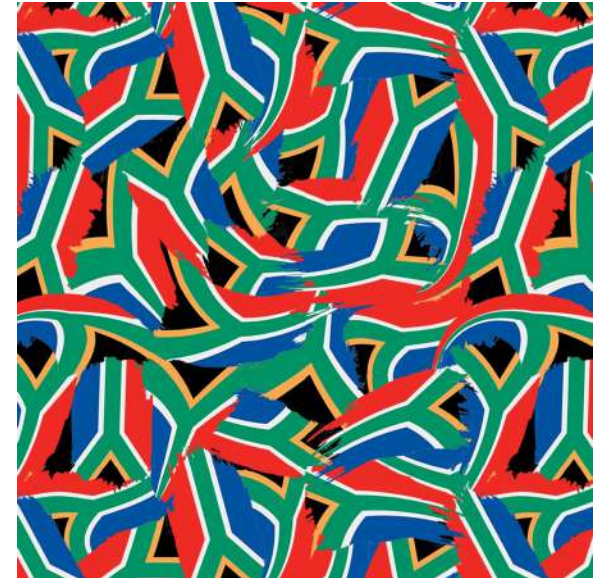
Image shown is approx. 30cm x 30cm



## CARBON BRAID

Design Pattern # : 10520

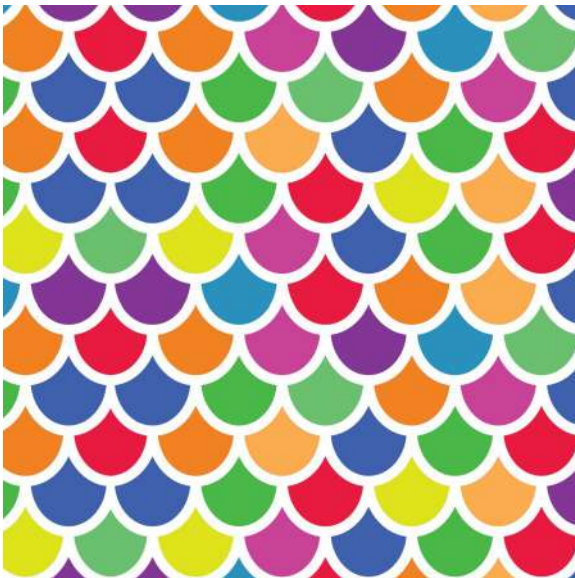
Image shown is approx. 30cm x 30cm



## SA FLAG CAMO

Design Pattern # : 10521

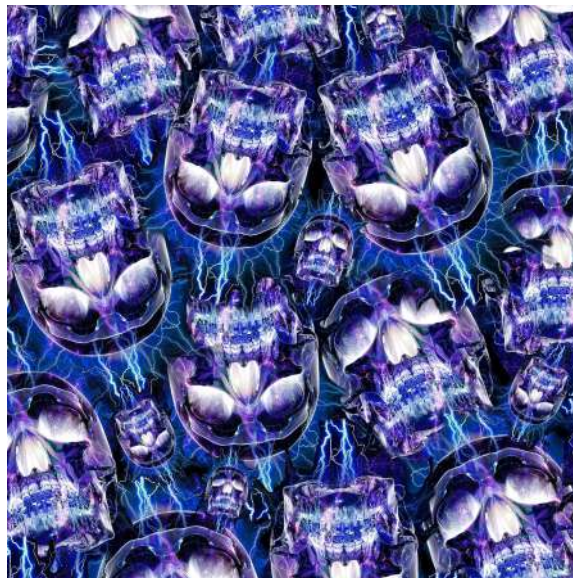
Image shown is approx. 30cm x 30cm



## FISH SCALES

Design Pattern # : 10522

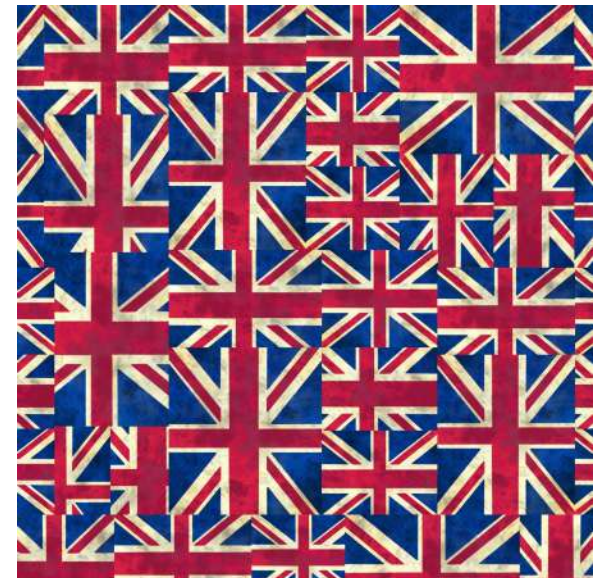
Image shown is approx. 30cm x 30cm



## LIGHTNING SKULLS

Design Pattern # : 10523

Image shown is approx. 30cm x 30cm

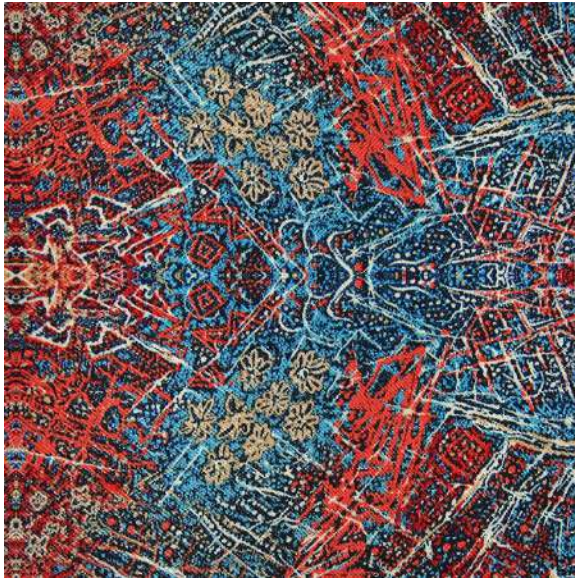


## RETRO BRITISH FLAG

Design Pattern # : 10524

Image shown is approx. 30cm x 30cm





## ABSTRACT FIBERS

Design Pattern # : 10525

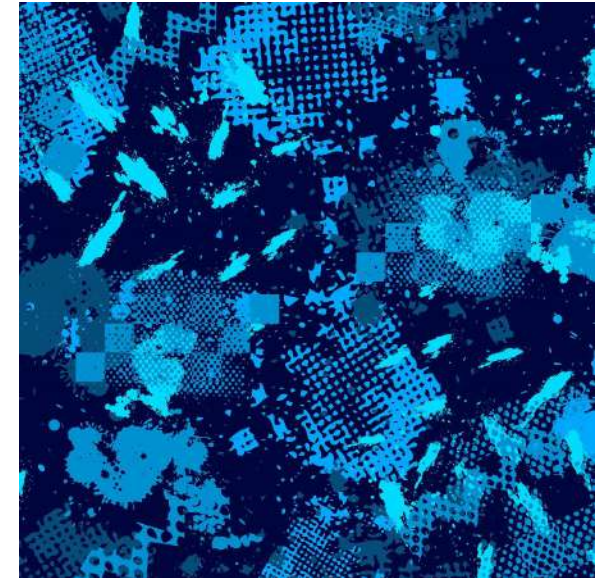
Image shown is approx. 30cm x 30cm



## BLUE CAMO

Design Pattern # : 10526

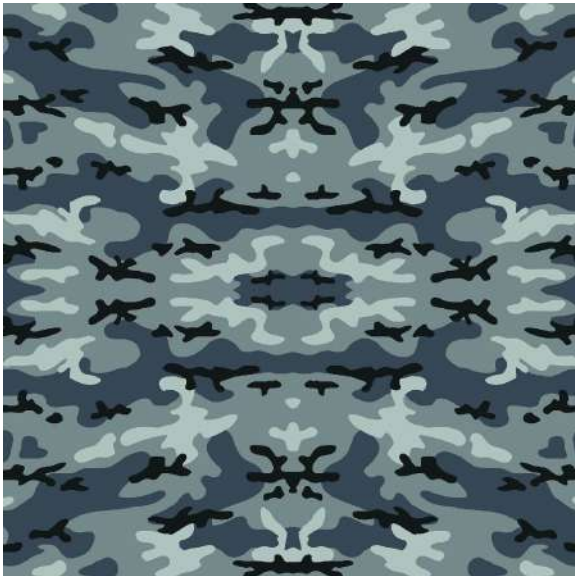
Image shown is approx. 30cm x 30cm



## DIGITAL BLUE CAMO

Design Pattern # : 10527

Image shown is approx. 30cm x 30cm



## GREY CAMO

Design Pattern # : 10528

Image shown is approx. 30cm x 30cm



## RED BLUE REVOLUTION

Design Pattern # : 10529

Image shown is approx. 30cm x 30cm



## RED CAMO

Design Pattern # : 10530

Image shown is approx. 30cm x 30cm

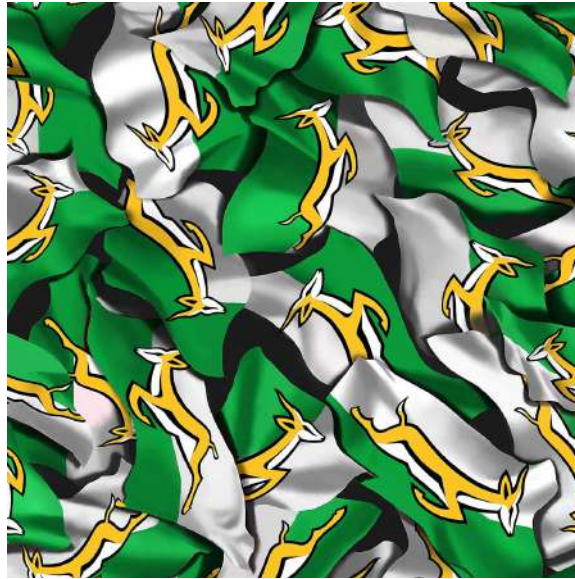




## BLACK & WHITE SKULLS

Design Pattern # : 10531

Image shown is approx. 30cm x 30cm



## SPRINGBOKS

Design Pattern # : 10532

Image shown is approx. 30cm x 30cm



## FACE MASKS

Design Pattern # : 10533

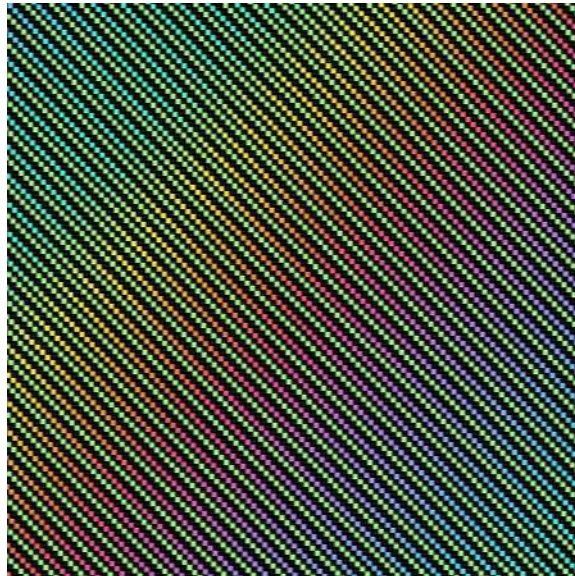
Image shown is approx. 30cm x 30cm



## GEOMETRIC BAUHAUS

Design Pattern # : 10534

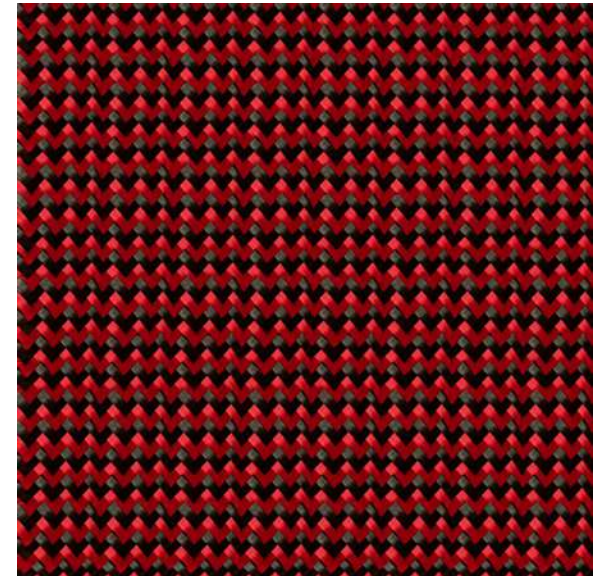
Image shown is approx. 30cm x 30cm



## COLORFUL CARBON

Design Pattern # : 10535

Image shown is approx. 30cm x 30cm

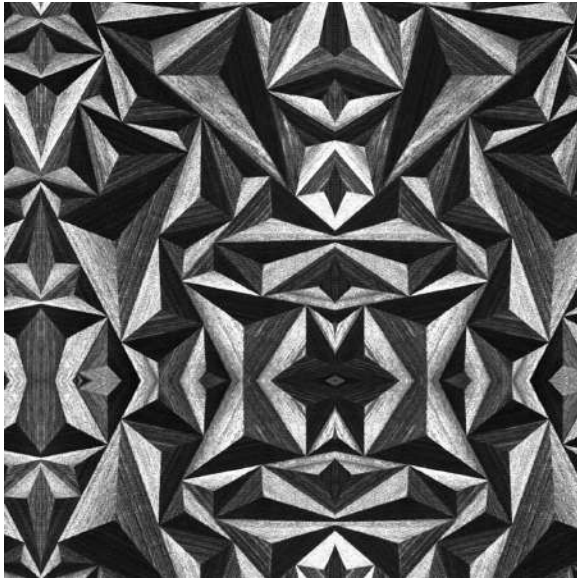


## RED BRAID

Design Pattern # : 10536

Image shown is approx. 30cm x 30cm





### 3D PYRAMIDS

Design Pattern # : 10537

Image shown is approx. 30cm x 30cm



### PLAIN WOOD

Design Pattern # : 10538

Image shown is approx. 30cm x 30cm



### WICKER WOOD

Design Pattern # : 10539

Image shown is approx. 30cm x 30cm



### COLOURFUL LIGHTNING

Design Pattern # : 10543

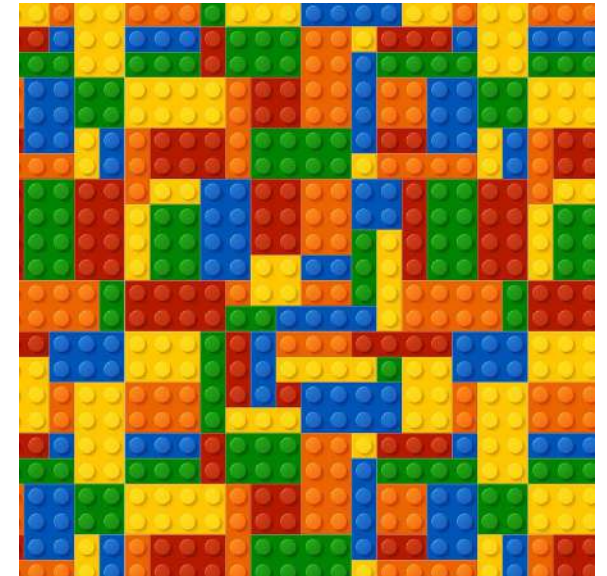
Image shown is approx. 30cm x 30cm



### FLAMES

Design Pattern # : 10544

Image shown is approx. 30cm x 30cm

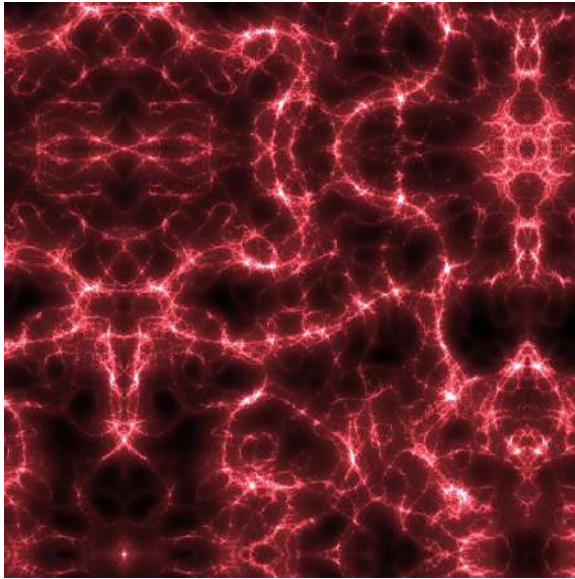


### LEGO

Design Pattern # : 10545

Image shown is approx. 30cm x 30cm





## RED LIGHTNING

Design Pattern # : 10546

Image shown is approx. 30cm x 30cm



## MOTORCYCLE SKELETONS

Design Pattern # : 10547

Image shown is approx. 30cm x 30cm



## TIGER PRINT

Design Pattern # : 10548

Image shown is approx. 30cm x 30cm



## TIE DYE

Design Pattern # : 10549

Image shown is approx. 30cm x 30cm



## MOTORCYCLE MADNESS

Design Pattern # : 10550

Image shown is approx. 30cm x 30cm

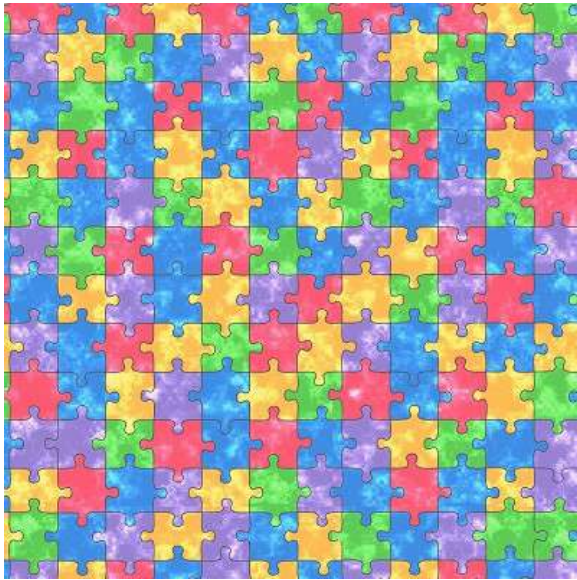


## LUMINOUS BUTTERFLIES

Design Pattern # : 10551

Image shown is approx. 30cm x 30cm





## PUZZLE PIECES

Design Pattern # : 10553

Image shown is approx. 30cm x 30cm



## COLOURFUL BUTTERFLIES

Design Pattern # : 10554

Image shown is approx. 30cm x 30cm



## BROWN CAMO

Design Pattern # : 10555

Image shown is approx. 30cm x 30cm



## JAWS

Design Pattern # : 10556

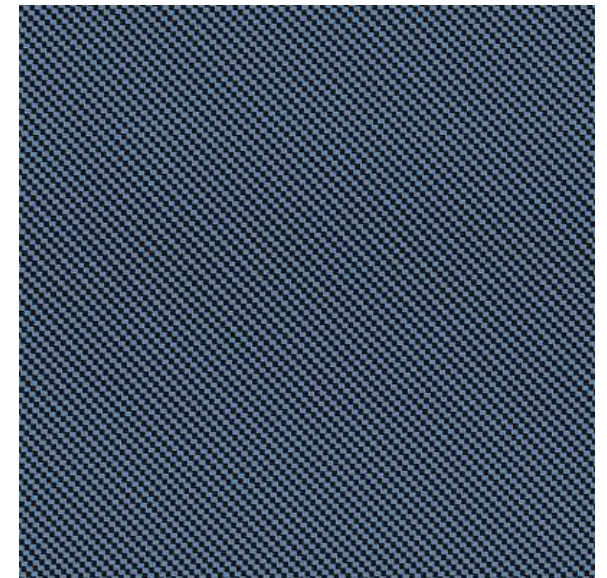
Image shown is full sewn sleeve



## SHARKS

Design Pattern # : 10557

Image shown is approx. 30cm x 30cm

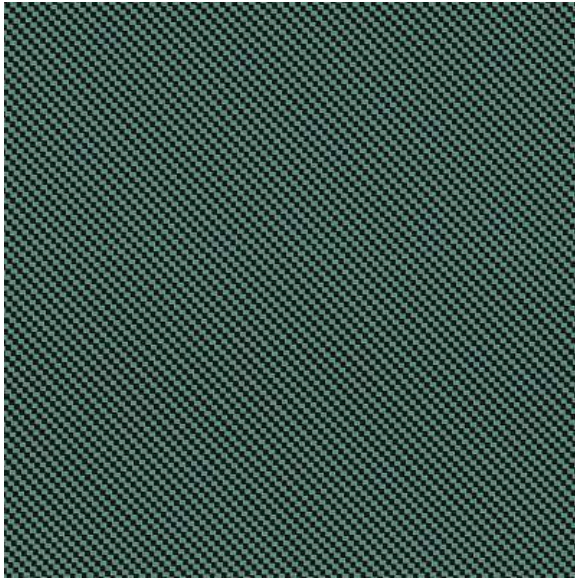


## BLUE CAMO

Design Pattern # : 10558

Image shown is approx. 30cm x 30cm

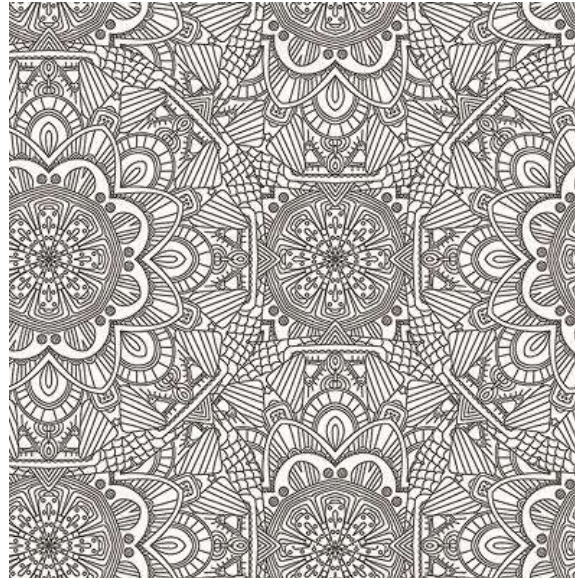




### **CARBON TEAL**

Design Pattern # : 10559

Image shown is approx. 30cm x 30cm



### **MANDALA**

Design Pattern # : 10560

Image shown is approx. 30cm x 30cm



### **OCEAN**

Design Pattern # : 10561

Image shown is approx. 30cm x 30cm

## **DISCLAIMER**

Design pattern colors may vary slightly from what is depicted on your monitor screen or print catalogue.

LimbArt product is guaranteed and any new or unused product may be returned for exchange.

Ortholam reserves the right to refuse warranty claims and does not issue credit or refunds for LimbArt Sleeves, Covers or Fabric Panels.





# LimbArt CUSTOM DESIGNS

Custom designs are available upon request.

Simply send us your artwork or provide us with the details of your required design, and we'll have our graphic designer create your artwork for you.

We can provide custom sleeves sewn to any size required, on quality 240g or 320g Lycra fabric.

For the best possible results, we recommend using the LimbArt Resin from Ortholam. It is crystal clear and will make your graphics and colours really stand out.











# LimbArt LAMINATING SLEEVES, COSMETIC COVERS AND FABRIC PANEL SIZES

## LAMINATING SLEEVES

SKU	Size	Proximal Circumference	Distal Circumference	Length	Application
LAS-xxxxx-XS	X-Small	23cm (9")	15cm (6")	43cm (17")	Adult Arm or Child Leg
LAS-xxxxx-S	Small	30cm (12")	18cm (7")	43cm (17")	Mostly for BK
LAS-xxxxx-M	Medium	38cm (15")	20cm (8")	43cm (17")	Fits BK or AK
LAS-xxxxx-L	Large	46cm (18")	23cm (9")	43cm (17")	Mostly for AK
LAS-xxxxx-XL	X-Large	53cm (21")	25cm (10")	43cm (17")	For special patients
LAS-xxxxx-SL	S Long	30cm (12")	18cm (7")	53cm (21")	For AK
LAS-xxxxx-ML	M Long	38cm (15")	20cm (8")	53cm (21")	For AK
LAS-xxxxx-LL	L Long	46cm (18")	23cm (9")	53cm (21")	For AK
LAS-xxxxx-XLL	XL Long	53cm (21")	25cm (10")	53cm (21")	For special patients AK

## COSMETIC COVERS

SKU	Size	Proximal Circumference	Distal Circumference	Length	Application
LAC-xxxxx-XS	CHILD/XS	28cm (11")	16cm (7")	34cm (13")	For slender adult or child
LAC-xxxxx-SM	S/M	31cm (12")	20cm (8")	46cm (18")	For BK, adults
LAC-xxxxx-ML	M/L	36cm (14")	20cm (8")	46cm (18")	For BK, adults
LAC-xxxxx-XL	XL	52cm (20.5")	24cm (9.5")	55cm (22")	For AK, adults
LAC-xxxxx-XSL	CHILD/XS Long	28cm (11")	16cm (7")	66cm (26")	For AK child/slender adult
LAC-xxxxx-SML	S/M Long	31cm (12")	20cm (8")	66cm (26")	For AK, adults
LAC-xxxxx-MLL	M/L Long	36cm (14")	20cm (8")	66cm (26")	For AK, adults
LAC-xxxxx-XLL	XL Long	58cm (23")	38cm (15")	66cm (26")	For AK, adults

## LAMINATING FABRIC PANELS

SKU	Size	Width	Length
LAP-xxxxx	Fabric Panel	50cm (20")	70cm (28")

When ordering items, replace the xxxxx in the SKU # with the required Design Pattern # located below each design image.

When choosing your size, remember that the fabric needs to stretch a little.

**CUSTOM DESIGNS AND SIZES ARE AVAILABLE ON REQUEST – ALLOW EXTRA TIME FOR CUSTOM FABRICATION**





# LimbArt LAMINATING RESIN

For the best possible results, we recommend using the **LimbArt Resin** from Ortholam. It is crystal clear and will make your graphics and colours really stand out.

Other advantages include:

- \* Low odor and volatile emissions
- \* High gloss formula
- \* Long shelf life
- \* Super strong
- \* Sets in 30 minutes



The best choice of  
resin to make your  
socket  
graphic artwork  
“POP”

Email or WhatsApp your Order to:  
[sales@ortholam.co.za](mailto:sales@ortholam.co.za)  
082 811 6280

